



# HO Scale Structure Kit

## VIC'S BARBER SHOP

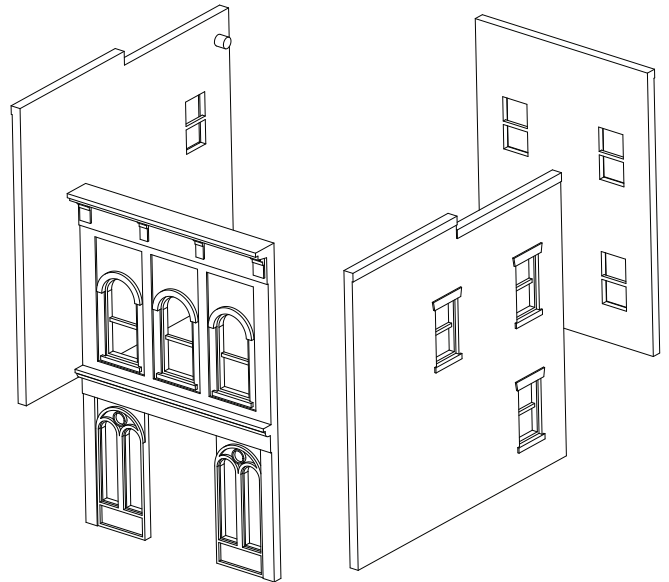
# 933-3471

Thanks for purchasing this Cornerstone Series® kit. Please read all instructions and study the drawings before starting. All parts are styrene plastic, so use compatible glue. If you wish to decorate your model, use paints for plastic models. With appropriate details and signs, your finished model fits almost any era.

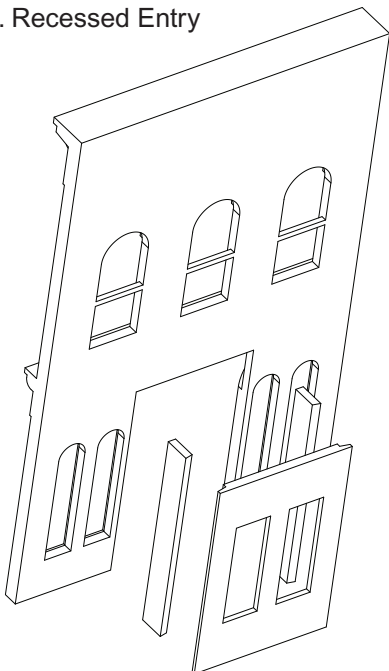
For towns and cities, the business district was always a source of civic pride. With space at a premium, buildings were typically no more than two or three stories tall and packed side-by-side. Brick was the material of choice as it presented a modern image and increased fire safety. In the Victorian era, lavish decoration became common on the front, which was most visible to shoppers. The first floor was used entirely for the business, with the owner living upstairs. In later years, the owner might move to the suburbs, renting the upper floors as offices or apartments. Many buildings remained much as they had been built into the 1950s, when the fronts were updated with steel and glass. Today, many of these historic buildings have been remodeled and painted to match their as-built appearance.

1) Begin assembly by squaring off the front edge of both side walls, and both edges of the back wall using a large file or sandpaper. Note that the side walls fit behind the front wall, and the rear wall fits between the side walls. Glue the walls together and set aside to dry.

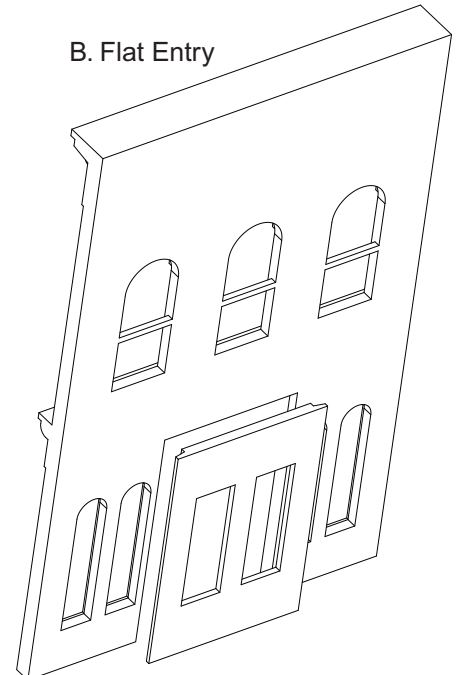
2) Test fit the roof, and make any adjustments to obtain a good fit. Do not glue the roof at this time.



A. Recessed Entry

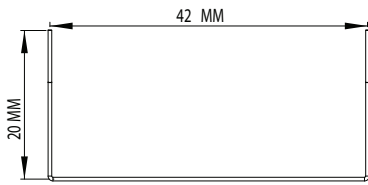
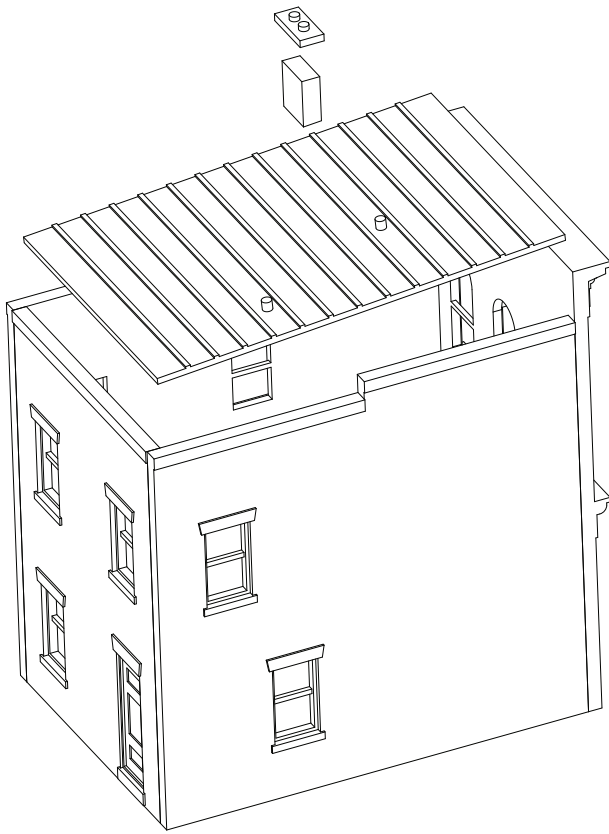


B. Flat Entry

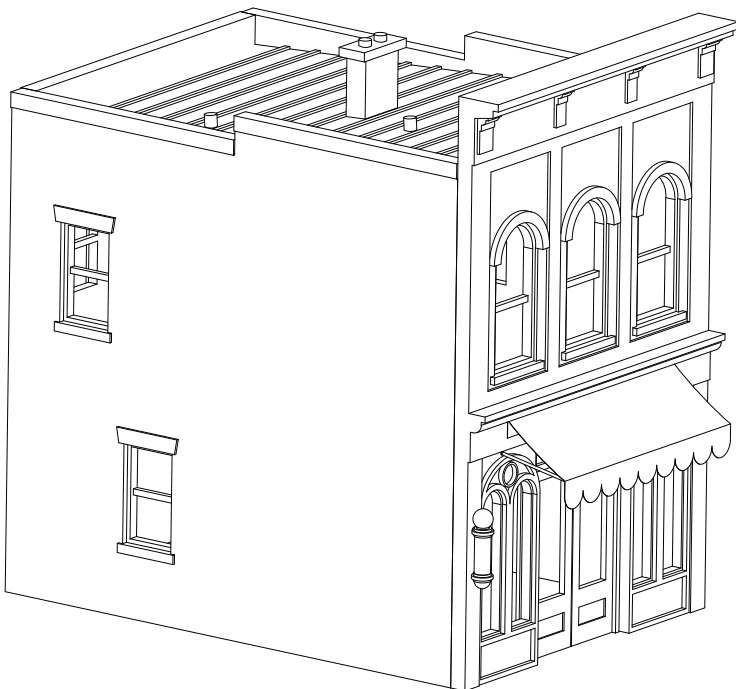
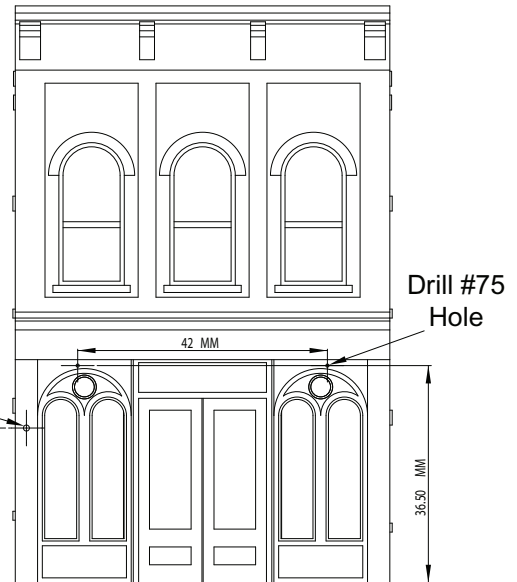


3) You have the option to build a Recessed entry, or Flat entry for the Front wall. For the Recessed entry, glue the Side Panels to the Front Door Panel, and then to the front wall. (See inset A). For a Flat Entry, glue the Front Door Panel directly to the Front Wall. (See inset B).

4) Add the acetate windows and printed interior graphics now. Cut the clear acetate slightly larger than the window and glue in place using Walthers Goo® or other contact adhesive. Trim the individual art elements and tape them to the back of the clear glass using a quality tape. Stripes for the Barber Pole should be rolled using a small piece of tubing or dowel before application. Lightly brush a thin coating of glue to the center section of the pole, and apply the graphic. Make sure the seam faces the backside of the pole, against the wall, where it won't be seen. The roof can now be glued into position. Single or double stack chimneys are provided. Add as desired, or where shown, on the roof.



The Awning and Barber Pole are installed last, since they are delicate. Bend the supplied brass wire using the template to make the support.



Use the drill template to locate the holes for the Barber Pole and the Awning Support. Test fit the wire and make any required adjustments, but do not glue the support in at this time. Trim out the awning using a sharp knife, and fold on the lines indicated.

Add some sag to the top surface by gently bending the awning with your thumbs. Glue the awning using a water based adhesive to the flat space above the front door. When dry, place the wire support into position and glue it in place. The leading edge of the support should be even with the front fold of the awning. You can glue the awning to the wire to help keep it in place.